



Mission Statement

Off Terrain's mission is to serve its customer through the production & manufacturing of high quality, precision designed, highly ruggedized, overbuilt, yet affordable products, aftermarket parts, & accessories.



West Hall
Booth#59220

Off-Terrain
tested. tough.



Road Shower Water Tank



Off Terrain Model#	Capacity	Size	Material
OT-RDSW-04	4GL	32.5" x 7" x 4.7" (825 x 178 x 120mm)	Aluminum alloy with durable powder coating finish
OT-RDSW-08	8GL	65" x 7" x 4.7" (1650 x 178 x 120mm)	

* Other sizes are available upon request: 5.3GL, 7GL, 8GL, 9.5GL

DETAILS:

- Crafted from Off Terrain's **tested. tough.** high-strength, integrated food-grade aluminum alloy, designed for rugged off-road conditions.
- Treated surface: Black powder coated, fade resistant, anti-UV and rust-proof.
- Built-in anti-wave plates, minimizing water movement, reducing noise while enhancing vehicle stability for a smoother driving experience.
- Three-sided groove design for flexible mounting: roof rack, roof arch, trunk, crossbar and tow hitch.
- A spare water outlet is included on the other end for added convenience.



West Hall
Booth#59220

Off Terrain
tested. tough.



Explorer Water Tank



Grey
OT-RDSW-01

Black
OT-RDSW-02

Orange
OT-RDSW-03

SPECIFICATION:

SIZE: 59" x 11.8"x 5.9"/ 1500x 300x 150MM	CAPACITY: 8GL/30L	MATERIAL: PE PLASTIC	THICKNESS: 1/5"/ 4-5MM
WEIGHT: 19.8LBS/9KG	HIDDEN/EXTERNAL WATER HOSE LENGTH 8.2FT/2.5M STATIC: 4.9FT/1.5M WATER INJECTION: 16.4FT/5M	EFFLUENT WATER PRESSURE: 0.6Mpa/85PSI (MEASURED)	CIGARETTE LIGHTER CONNECTION LINE 16.4FT/5M WITH SWITCH
INSTALLATION: ALUMINUM ALLOY ANTI-THEFT BRACKET	INSTALLATION POSITION: ROOF RACK PLATFORM MULTIFUNCTIONAL EXPANSION RACK, ETC.		





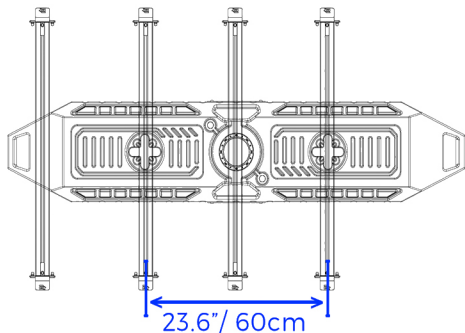
West Hall
Booth#59220

Off-Terrain
tested. tough.

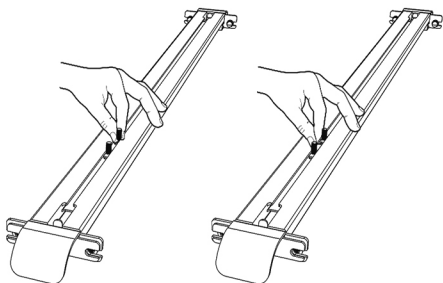


Installation Steps

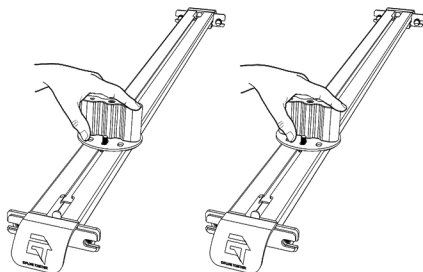
STEP 1 Adjust any two parallel crossbars to a distance of 23.6in/ 60cm.



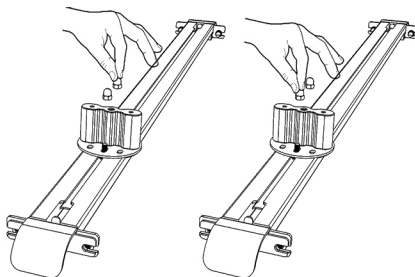
STEP 2 Take four T-shaped screws and place them inside the crossbar grooves.



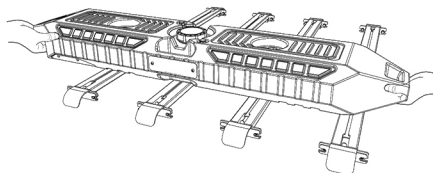
STEP 3 Align the bracket base with the screws.



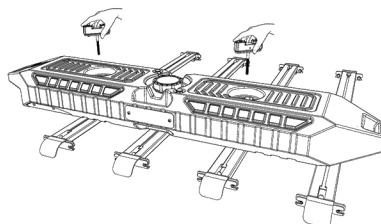
STEP 4 Install the clamping plates and nuts.



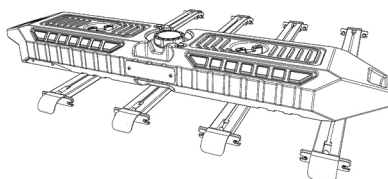
STEP 5 Place the tank by aligning it with the bracket base



STEP 6 Install the anti-theft bracket.



STEP 7 Lock (completion).





West Hall
Booth#59220

Off Terrain
tested. tough.



Adventure Water Tank- Basic Edition



Grey
OT-RDSW-05



Black
OT-RDSW-06



Orange
OT-RDSW-07

SPECIFICATION:

SIZE: 63" x 11"x 5.9"/ 1600x 280x 150MM	CAPACITY: 7GL/26L	MATERIAL: PE PLASTIC	THICKNESS: 1/5"/ 4-5MM
WEIGHT: 22LBS/10KG	HIDDEN/EXTERNAL WATER HOSE LENGTH 8.2FT/2.5M STATIC: 4.9FT/1.5M WATER INJECTION: 16.4FT/5M	EFFLUENT WATER PRESSURE: 0.6Mpa/85PSI (MEASURED)	CIGARETTE LIGHTER CONNECTION LINE 16.4FT/5M WITH SWITCH
INSTALLATION: ALUMINUM ALLOY ANTI-THEFT BRACKET	INSTALLATION POSITION: ROOF RACK PLATFORM MULTIFUNCTIONAL EXPANSION RACK, ETC.		





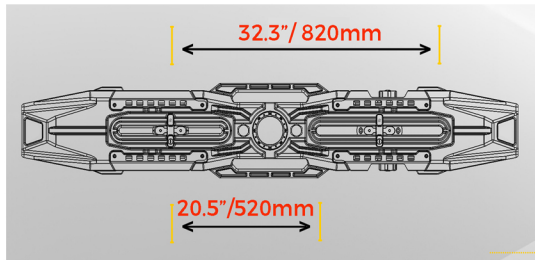
West Hall
Booth#59220

Off Terrain
tested. tough.

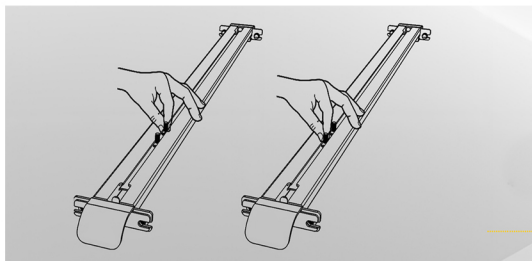


Roof Installation Steps

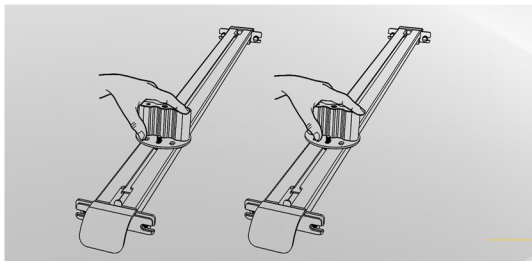
STEP 1 The water tank bracket's adjustable installation distance is 20.5"-32.3". Please confirm the installation position.



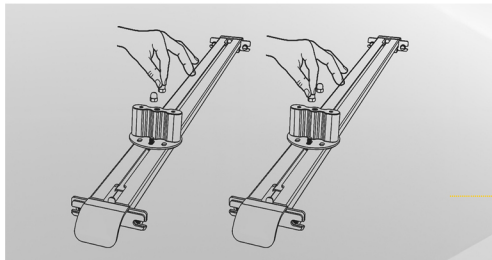
STEP 2 Take four T-shaped screws and place them inside the crossbar.



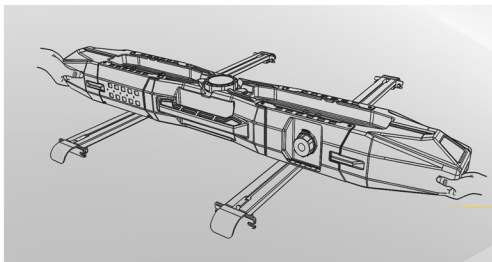
STEP 3 Align the bracket base with the screws.



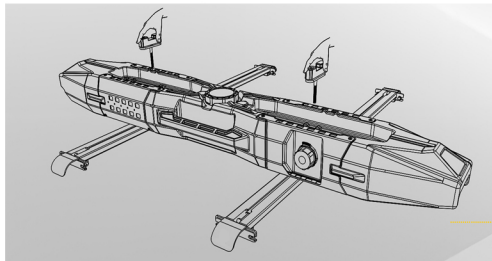
STEP 4 Install the clamping plates and nuts.



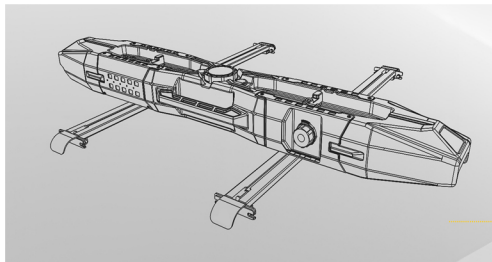
STEP 5 Place the tank by aligning it with the screws



STEP 6 Install the anti-theft brackets.



STEP 7 Lock (completion).



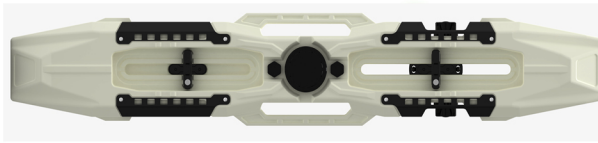


West Hall
Booth#59220

Off-Terrain
tested. tough.



Adventure Water Tank- Armored Edition



Grey
OT-RDSW-08



Black
OT-RDSW-09



Orange
OT-RDSW-10

SPECIFICATION:

SIZE:	CAPACITY:	MATERIAL:	THICKNESS:
63" x 11"x 5.9" 1600x 280x 150MM	7GL/26L	PE PLASTIC	1/5" / 4-5MM
WEIGHT:	HIDDEN/EXTERNAL WATER HOSE LENGTH	EFFLUENT WATER PRESSURE:	CIGARETTE LIGHTER CONNECTION LINE
22LBS/10KG	8.2FT/2.5M STATIC: 4.9FT/1.5M WATER INJECTION: 16.4FT/5M	0.6Mpa/85PSI (MEASURED)	16.4FT/5M WITH SWITCH

INSTALLATION:
ALUMINUM ALLOY ANTI-THEFT BRACKET

INSTALLATION POSITION:
ROOF RACK PLATFORM
MULTIFUNCTIONAL EXPANSION RACK, ETC.

Difference

With small trim strip

With wider trim strip



Basic Edition



Armored Edition





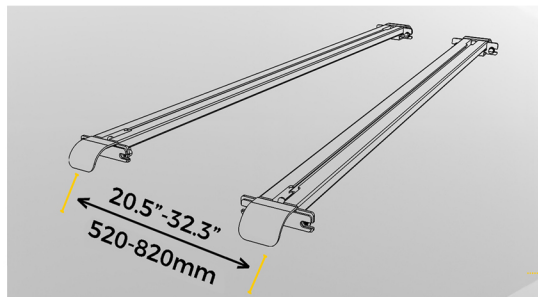
West Hall
Booth#59220

Off  Terrain
tested. tough.

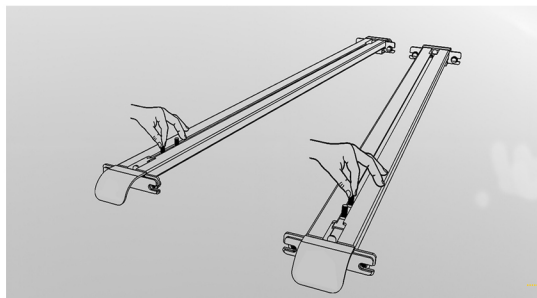


Side Mount Installation Steps

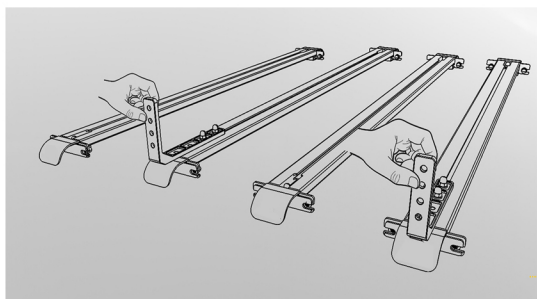
STEP 1 The water tank bracket's adjustable installation distance is 20.5"-32.3". Please confirm the installation position.



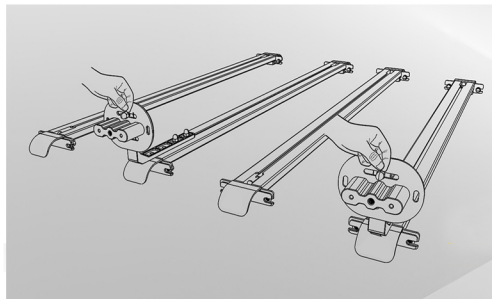
STEP 2 Take four T-shaped screws and place them inside the crossbar.



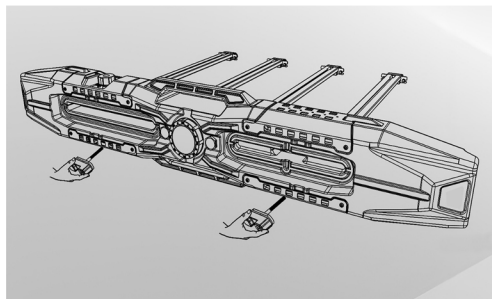
STEP 3 Place the L-shaped side mount bracket, place the clamping plate and secure screws.



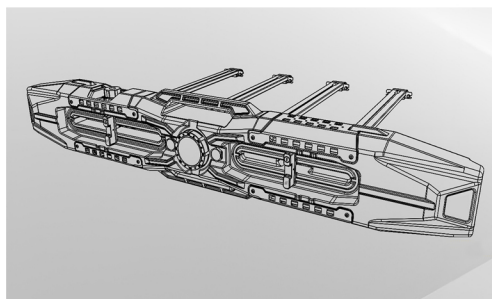
STEP 4 Install the clamping plates and nuts to secure the bracket base.



STEP 5 Install the anti-theft brackets.



STEP 6 Lock (completion).





West Hall
Booth#59220

Off-Terrain
tested. tough.



Recovery Traction Tracks (2pcs)



OT-RT-002



OT-RT-003



OT-RT-004

DETAILS:

- Off Terrain Recovery Traction Tracks are **tested.tough.**, constructed from pure nylon material, lightweight yet strong, with a working load to withstand **18 Tons**.
- Equipped with **advanced traction patterns** and **non-slip designs**, these tracks offer superior grip on various terrains, making vehicle recovery smoother in mud, sand, and snow.
- Comes with **retrival leashes** for easy handling. Designed to mount on most vehicles for all types of off-road adventures.
- The tracks maintain their integrity in extreme temperatures, **from freezing cold to scorching heat, offering reliable performance in any climate.**
- **Lightweight** yet rugged construction allows for easy storage and transportation without compromising strength and functionality.
- Available in various colors and designs to match your personal preferences and vehicle aesthetics.

Off Terrain Model#	Color	Capacity	Diamension	Weight (2pcs)
OT-RT-002	Black	40,000 lbs (18,000 kgs)	41.3" x 11.8" x 2.4" (1050 x 300 x 61mm)	15 lbs (6.8kgs)
OT-RT-003	Red	40,000 lbs (18,000 kgs)	41.3" x 11.8" x 2.4" (1050 x 300 x 61mm)	15 lbs (6.8kgs)
OT-RT-004	Grey	40,000 lbs (18,000 kgs)	43" x 12.8" x 2.7" (1090 x 327 x 68mm)	15.2 lbs (6.9kgs)



West Hall
Booth#59220

Off-Terrain
tested. tough.



Water/Fuel Tank Traction Board



DETAILS:

- Off Terrain **tested.tough.** water tank traction board is designed to meet all your fuel storage needs with its impressive features and high-quality construction. Crafted to be impact-resistant and lightweight yet strong, and ensures long-lasting durability.
- Featuring a **built-in nozzle** for convenient use, the fuel tank offers high performance and convenience.
- The **anti-corrosion and UV protection** properties ensure that the gasoline pack remains in top condition even when exposed to harsh environmental elements.
- Equipped with a **sure-seal gasket**. It offers **low permeability and a sure-seal gasket** for added protection against leaks. It is also designed to meet quality and safety standards for fuel storage.
- It can be installed in the truck bed rails or vehicle crossbars. **Suitable for complex field environments**, such as off-road vehicles, campers, travelers, is a great choice for the trip.
- To use it as a traction board, simply dig out the back tires and place the tracks underneath; **no towing or pushing is required.**

Off Terrain Model#	Capacity	Dimension	Weight(1pc)
OT-WT-001	1.84GL/7L	21.7" x 13" x 3.1" (550x 330x 80mm)	6.2lbs (2.8kgs)
OT-WT-002	4GL/15L	41.7" x 13" x 3.1" (1060x 330x 80mm)	11.7lbs (5.3kgs)



Built-in nozzle



Sure-seal gasket





West Hall
Booth#59220



Foldable Flag Pole Mount



Diameter: 1.1inch / 28mm

DETAILS:

- Constructed from premium aluminum alloy with a **rust-resistant coating** for exceptional durability, even in rugged off-road conditions.
- Easily mounts to any T-slot or pre-drilled hole using M8 screws, compatible with **a wide range of vehicle models**.
- Bolt-on design allows for fast installation. Simply insert your flagpole and secure it with side screws for a stable, secure hold.
- The **90-degree rotation** and **quick-release mechanism** provide flexible flag positioning.
- When not in use, the mount neatly folds away by pulling the bottom pin.

Off Terrain Model#	Size	Material	Weight
OT-FM-01	12" x 2.1" x 2" (308 x 54 x 50 mm)	Aluminum alloy with durable powder coating finish	3.3LBS (1.5 KGS)





West Hall
Booth#59220



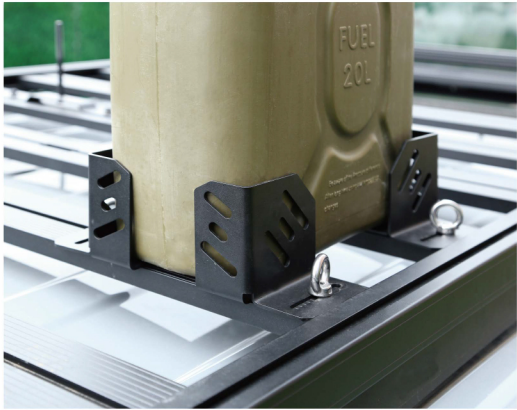
Roof-Mounted Jerrycan Holder



DETAILS:

- Constructed from **premium aluminum alloy**, Off Terrain **tested. tough.** jerrycan holder is engineered to withstand tough off-road environments. The surface treatment provides **superior corrosion resistance, UV protection, and rust resistance.**
- Designed to fit seamlessly **on any roof rack with holes or T-slot grooves.** This holder is easily secured using M8 x18 eye bolts and M8 T-slot screws, ensuring a solid and stable setup.
- Comprising four independent brackets, this holder allows for **versatile use.** In addition to securing jerry cans, the individual pieces can be adjusted and spaced to accommodate various cargo sizes on your roof platform.
- Simply secure items with ropes or straps for safe transportation.

Off Terrain Model#	Size	Material	Weight
OT-JCH-01	4" x 4" x 4" (102 x 100 x 103mm)	Aluminum alloy with durable powder coating finish	1.1 LBS x 4 PCS (2 KGS)





West Hall
Booth#59220

Off-Terrain
tested. tough.



Gasoline Pack Mount Lock Set



DETAILS:

- Off Terrain **tested.tough**.pack mount lock set includes 1*mounting bracket, 2*keys, 4*nut, 4*shim, 4*screw, 1*wrench, ensuring that your gas can is securely fastened.
- Crafted from high-quality aluminum to **withstand corrosion, wear, and extreme conditions**. Its superior durability and **heightened security** provides the ultimate protection for your **gasoline pack, fuel water pack, or storage box, etc.**
- The pack mount lock set is designed to fit a wide range of gasoline packs, fuel water packs, storage boxes and gas can. It is compatible with various off-road vehicles, trucks, ATV, UTV and motorbikes, snowmobiles, watercraft, trailers. You can use the lock with different equipment without any hassle or need of additional accessories.
- Installing the pack mount lock is a breeze. **No complicated steps**, just a simple and straightforward setup process.

Off Terrain Model#	Size	Material	Weight
OT-PM-01	4.1" x 4.1"x 4.7" (105x 105x 120mm)	Aluminum alloy with black electrocoating	0.67 LBS (0.3 KGS)

HOW TO INSTALL 1



1. Put the mount base in the right position.



2. Use screws to install it tightly.



3. Put the fuel tank pack through it.



4. Rotate the T-handle and complete the installation.

HOW TO INSTALL 2



1. Place the T-shaped screw in the correct position



2. Fix the base with washers and nuts



3. Place the water tank correctly into the base



4. Tighten the handle (complete)



West Hall
Booth#59220

Off-Terrain
tested. tough.



Aluminum Hawse Fairlead with Hook



Off Terrain Model#	OT-HF-001/002/003
Mounting hole spacing	10 inches/254mm
Strength	19000lbs
Material	Forged 7075 Aluminum alloy
Color	Black, Red, Silver
Weight	4.85lbs /2.2kgs
Feature	Protective rope; preventing diagonal pulling
Including	1 Fairlead and 1 Towing Hook.

S-Shape Integrated Quick Shackle



Off Terrain Model#	OT-QS-001/002
Rated strength	17600lbs/ 8Ton
Breaking strength	33000lbs/ 15Ton
Material	Forged 40CR manganese steel with strong corrosion resistance
Color	Black, Red
Feature	Quick and easy connect and release. The heavy-duty construction ensures reliable performance in challenging conditions.

S-Shape Integrated Quick Shackle



Off Terrain Model#	OT-QS-003/004/005/006/007
Strength	57000lbs/ 25.8Ton
Material	Aviation Aluminum
Color	Black, Red, Yellow, Green, Silver
Feature	Easy Installation, No Extra Tools Needed



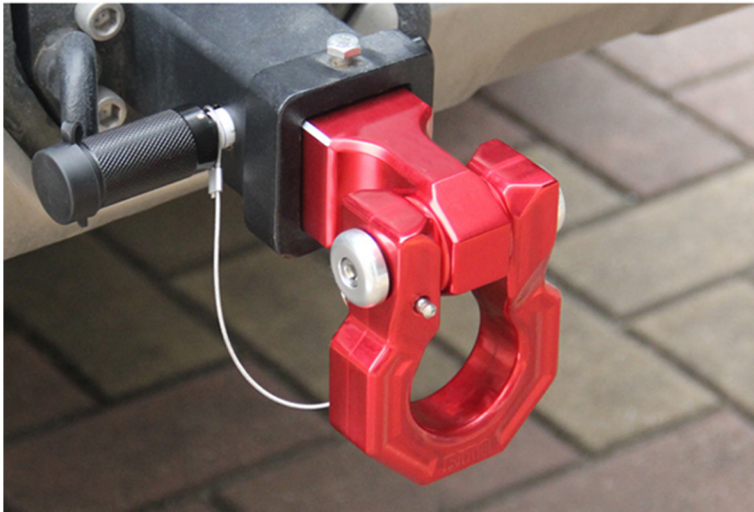
West Hall
Booth#59220

Off-Terrain
tested. tough.



Aluminum Shackle Hitch Receiver 2"

OT-HR-001





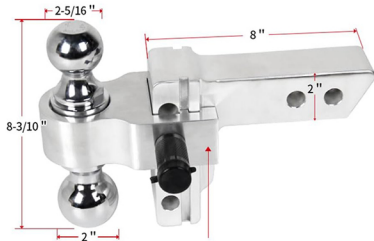
West Hall
Booth#59220

Off-Terrain
tested. tough.

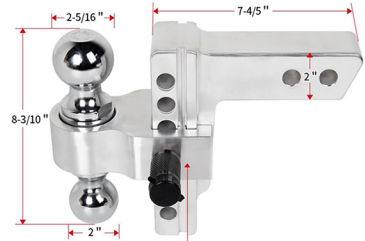


Adjustable Aluminum Trailer Hitch Ball Mount

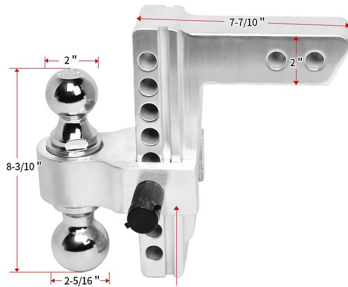
Off Terrain Model#	Specification	Solid Shank	Ball size	Max. towing capacity	Hole spacing	Adjustable spacing	Max. Load
OT-TH-001	4inch/2+5	2inch	2-5/16" / 2"	12500lbs/ 8000lbs	1"	Up:0-6inch Down: 0-6inch	950lbs/ 431kgs



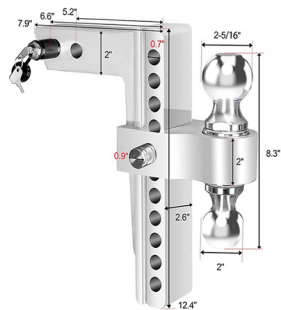
Off Terrain Model#	Specification	Solid Shank	Ball size	Max. towing capacity	Hole spacing	Adjustable spacing	Max. Load
OT-TH-002	6inch/2+7	2inch	2-5/16" / 2"	12500lbs/ 8000lbs	1"	Up:0-6inch Down: 0-6inch	950lbs/ 431kgs



Off Terrain Model#	Specification	Solid Shank	Ball size	Max. towing capacity	Hole spacing	Adjustable spacing	Max. Load
OT-TH-003	8inch/2+9	2inch	2-5/16" / 2"	12500lbs/ 8000lbs	1"	Up:0-8inch Down: 0-8inch	950lbs/ 431kgs

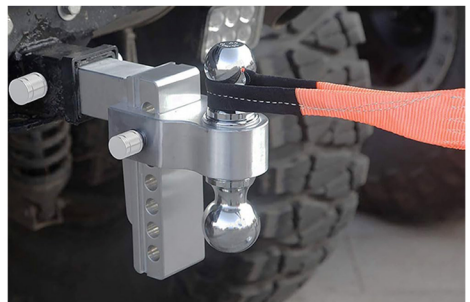


Off Terrain Model#	Specification	Solid Shank	Ball size	Max. towing capacity	Hole spacing	Adjustable spacing	Max. Load
OT-TH-004	10inch/2+11	2inch	2-5/16" / 2"	12500lbs/ 8000lbs	1"	Up:0-10inch Down: 0-10inch	950lbs/ 431kgs



DETAILS:

- The body of the trailer hitch is made of aerospace-grade aluminum, providing a smooth, durable finish with excellent **corrosion resistance**. The ball of the trailer hitch is crafted from hot-forged Csteel, delivering superior strength.
- Off Terrain's **tested.tough.** fittings feature a **one-piece ball head** that doesn't require a ball seat, eliminating the risk of it falling out and significantly enhancing safety.
- The hitch is adjustable for vehicles of various heights and is compatible with standard 2.5-inch receivers, ensuring universal compatibility across different vehicles.
- Each adjustable trailer hitch includes two sets of lock-and-key combinations to secure the ball mount platform and hitch, **enhancing safety and providing an anti-theft feature**.





West Hall
Booth#59220

Off-Terrain
tested. tough.



Kinetic Recovery Rope

DETAILS:

- INCREDIBLE BREAKING STRENGTH- Constructed from **heavy-duty double-braided nylon**, Off Terrain **tested. tough.** recovery rope is built to perform under the most severe circumstances.
- ABRASION-RESISTANT COATED EYELETS - Increase the life of your rope by reducing friction when recovering vehicles **with the heavy-duty coated eyelets.**
- STRESS REDUCING NYLON- All of our ropes are built from high stretch nylon and **elongate up to 30%** under load reducing jerking and stress on either vehicle.
- HEAVY DUTY & EXTRA LARGE STORAGE BAG (**Included at NO CHARGE**) - Store your rope in extra-large bag with room to spare for other gear.



Off Terrain Model #	UPC	Thickness	Length	Breaking Strength	Material
OT-RR-034	603922302520	3/4"(20mm)	20'(6m)	19000lbs	Nylon
OT-RR-078	603922302506	7/8"(22mm)	20'(6m)	29000lbs	Nylon
OT-RR-114	603922302513	1-1/4"(32mm)	20'(6m)	52500lbs	Nylon





West Hall
Booth#59220



Soft Shackle



Off Terrain's **tested. tough. soft shackles** are made of Ultra-high-molecular-weight polyethylene (UHMWPE), which allows our shackles to have extremely high breaking strengths that far exceed steel and other materials. Perfect for all applications of Off Roding.

Off Terrain Model #	UPC	Rope Diameter	Bow Diameter	Breaking Load	Unit Weight
OT-SS-516	603922302575	5/16"(8mm)	6 Inch	22000lbs(9988kgs)	2.5oz (70g)
OT-SS-038	603922302568	3/8"(10mm)	6 Inch	31000lbs(14074kgs)	3.8oz (110g)
OT-SS-716	603922302582	7/16"(11mm)	6 Inch	35000lbs(15890kgs)	4.6oz (130g)
OT-SS-012	603922302599	1/2"(13mm)	6 Inch	42000lbs(19068kgs)	5.3oz (150g)





West Hall
Booth#59220

Off-Terrain
tested. tough.



Synthetic Winch Rope Kit



- Off Terrain's **tested.tough. winch rope** is made of UHMWPE, it comes with a protective nylon sliding sleeve, which prevents overheating, slippage, rough or sharp surfaces.
- The kit includes: Winch rope, tube thimble, G70 clevis hook and strap, universal rubber hook stopper for ATV/UTV winches.

Off Terrain Model #	UPC	Thickness	Length	Breaking Load	Hook & Stopper
OT-WR-316	603922302544	3/16"(5mm)	50'(15m)	4400lbs	Yes
OT-WR-014	603922302537	1/4"(6mm)	50'(15m)	6400lbs	Yes
OT-WR-038	603922302551	3/8"(10mm)	95'(29m)	18720lbs	Yes





West Hall
Booth#59220

Off-Terrain
tested. tough.



Spare Tire Trash Bag

DETAILS:

- Made from high quality 1200Denier Oxford.
- Water resistant interior coating for bad weather.
- Drainage holes at bottom for unexpected leaks.
- Fits a standard 30 gallon trash bag for ease of dumping.

Off Terrain Model #	OT-ST-001
UPC	603922302643
Dimension	23.62" x 14.17" x 8.27" (60 x 36 x 21cm)
Spare part	2pc x 2" nylon buckles



Universal Fit ATV SADDLE BAG

DETAILS:

- Material: 600 Denier oxford.
- Keep all your gear essentials close at hand.
- Insulated exterior pocket with elastic band, **designed for safety.**
- Self-adhesive hook & loop fasteners are included, **for securing to the gas tank.**
- Snowmobile, ATV, Motorcycles Tank Saddlebag.



Off Terrain Model #	OT-SB-001
UPC	603922302650
Size	10.9" x 9.3" x 3.2" (27.6 x 23.6 x 8cm)



West Hall
Booth#59220

Off-Terrain
tested. tough.



Neoprene Winch Cover

DETAILS:

- Off Terrain **tested. tough.** Neoprene, UV protected, form fitting and durable.
- Cover will prevent external elements from invading the winch .
- Includes one pair of leather gloves .



Off Terrain Model #	UPC	Material	Used for	Size
OT-WC-003	603922302681	Neoprene	3000lbs-4000lbs	11.81" x 4.7" x 6.7" (30x 12x 17 cm)
OT-WC-002	603922302674	Neoprene	8000lbs-10000lbs	19.69" x 6.7" x 8.7" (50x 17 x 22 cm)
OT-WC-001	603922302667	Neoprene	12000lbs	19.69" x 5.51" x 12.22" (50x 14x 28.5cm)

Hi-lift Neoprene Cover

DETAILS:

- Off Terrain **tested. tough.** Neoprene, UV protected, form fitting and durable.
- Cover will prevent external elements from invading the jack.



Off Terrain Model #	OT-HL-001
UPC	603922302698
Material	Neoprene
Weight	3.1 oz (90 g)
Dimension	13" x 10" x 1" (33 x 25.4 x 2.5 cm)



tested. tough.

Corporate Office

Off Terrain

1400 112th Avenue SE Suite 100
Bellevue, WA 98004

www.offterrain.com